

Use the eButterfly app if you like taking fields notes on your phone.

eButterfly

# eButterfly App

eButterfly is an online platform and app that helps you find, identify, and share butterfly sightings, and contribute to scientific research and conservation. Everyone is welcome, from complete beginners to professionals.

## Getting Started

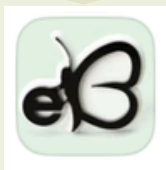
- 1 Go to app store on your phone.  
Download eButterfly app.

App Store  
Icon on  
iphone



or

App Store  
Icon on  
Android



eButterfly App Icon

- 2 Sign up

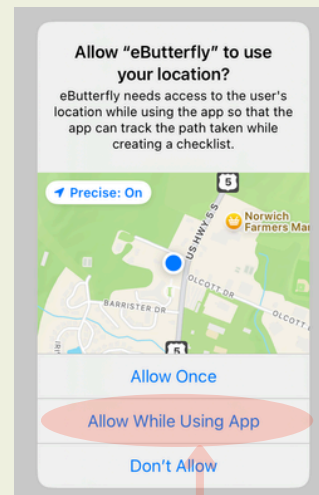
No account yet? Sign up

Username

Password

Sign In

Forgot username/password?



eButterfly will ask you to use your location. Choose: "Allow While Using App"

## Make a Checklist

Click "Submit" icon. Located in menu at bottom of screen.



Click "Start Checklist"

Date: 2025-07-10

Start time: 12:20

Start Checklist

If you can ID the butterfly, type the name into search bar.

20 Palmer Court, Hartf... 2025-07-10

Checklist

Monarch x OR

+	<b>Monarch</b> <i>Danaus plexippus</i> Tap to submit details
+	<b>Dotted Flat</b> <i>Celaenorrhinus monartus</i> Tap to submit details
+	<b>African Monarch</b> <i>Danaus chrysippus</i> Tap to submit details
+	<b>Southern Monarch</b> <i>Danaus erippus</i> Tap to submit details
+	<b>Blue Monarch</b> <i>Tirimala netiverana</i>

Select butterfly.

OR

If you need help with ID click camera icon.

20 Palmer Court, Hartf... 2025-07-10

Checklist

Search Species OR

Add a photo or take a picture. eButterfly will help ID.

Select one of the rows below to submit an incidental observation

Monarch <i>Danaus plexippus</i>	96.96%
Clouded Sulphur	0.58%

Repeat either of these steps for all species you see.

# Make a Checklist (cont.)

Once you've entered all of the butterflies you saw into your checklist, click "Next."

Select checklist type\* and fill out form.

Click Finish. Your checklist will be published. You can access checklists in menu at bottom of your screen.

\*Use one of the following checklist types:

## Traveling Survey

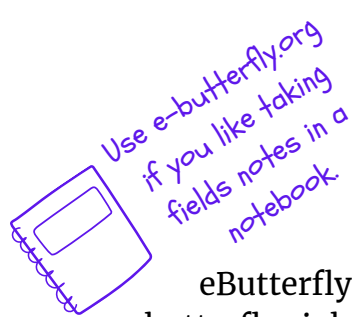
You traveled a specific distance - walking a trail in a green space.

## Area Survey

You surveyed a defined area, often performed when covering the same ground repeatedly during a specific amount of time.

## Incidental

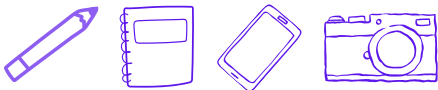
Observing butterflies was not your primary purpose or you lack information about how many other butterfly species are in the area during the observation period (e.g. butterflying while driving or gardening).

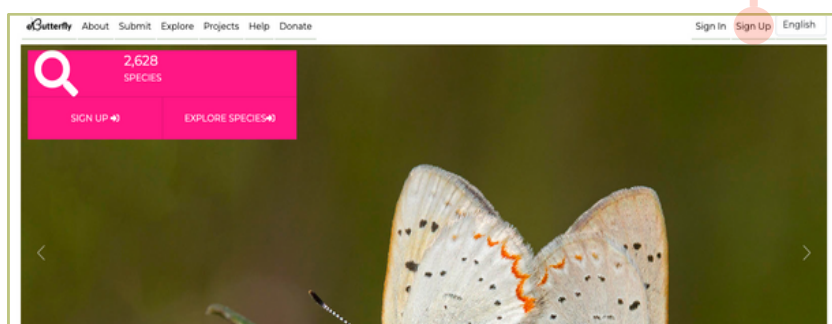


# e-Butterfly.org

eButterfly is an online platform and app that helps you find, identify, and share butterfly sightings, and contribute to scientific research and conservation. Everyone is welcome, from complete beginners to professionals.

## Getting Started

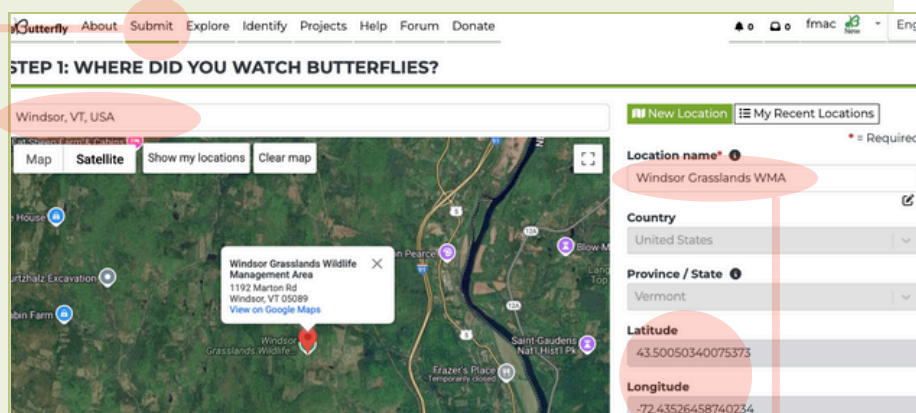
- Visit e-Butterfly.org and make an account.
- Do a practice survey in a nearby green space. Bring a notebook and pencil, plus either your phone or a camera.  

- When you see a butterfly, take a quick picture with your phone or your camera. Try to get closer. Take more pictures from multiple angles and with wings open and closed. (A blurry photo is better than no photo!)
- If you don't get a picture, that's okay! Write down notes on what you saw. It can be anything from "butterfly", to its family (swallowtail), genus (tiger swallowtails), or species (Canadian Tiger Swallowtail). Or just its color, location, number, and if it was interacting with plants.
- Come back home and enter your observations on e-butterfly.org.



## Entering Your Observations in a Checklist

### 1 Where Did You Watch Butterflies?

- Navigate to the "Submit" Page.
- Search for the location where you went butterflying.
- Longitude and Latitude coordinate will auto-populate (These fields are required.)
- Name your location.



# Entering Your Observations (cont.)

## 2 When (and how) did you go watch Butterflies?

Select Survey Type

Then fill out the fields on the right

**STEP 2: WHEN DID YOU GO WATCH BUTTERFLIES?**

☒ **Traveling Survey**  
You traveled a specific distance - Walking a trail in a green space.

☐ **Area Survey**  
You surveyed a defined area, often performed when covering the same ground repeatedly during a specific amount of time.

☐ **Point Count**  
Selected a predetermined place to spend a fixed amount of time observing an

Observation Date\*

Distance Traveled\*

Unit\*  
Select... | v

Start Time\*

Duration (minutes)\*

Party Size\* ⓘ

Are these butterflies in captivity? ⓘ  
☐ Yes ☒ No

Share with Other Observers ⓘ  
Search for users | v

## 3 What butterflies did you see?

**STEP 3: WHAT BUTTERFLIES DID YOU SEE?**

☒ Add a species

☐ Add image to automatically recognize species

If you can ID your butterfly choose “Add a species.”  
OR


If you can't ID your butterfly, eButterfly will help.  
Choose “Add image to automatically recognize species.”

Upload your best photo.

Click “Make Prediction.”

Select the top row.

Upload photo for AI 



Select or Drag & Drop a File  
Maximum image size is 20Mb



**West Virginia White**  
*Pieris virginiensis* 99.21%

**Mustard White**  
*Pieris oleracea* 0.30%

**Margined White**  
*Pieris marginalis* 0.03%

Create an entry for each species you saw.

(Fill out all fields marked with red asterisk.)

Click **Finish** to submit your checklist.

Three screenshots of the eButterfly observation form showing different species entries. Each entry includes fields for Count, Species Name, Add Image, eButterflyAI Lifesage, Adult, Quality, Average, Data Usage, Basis of Record, Expand to Enter Count, and Field Notes. The species shown are Northern Azure, West Virginia White, and West Virginia White.



# Butterfly Atlas

Join us as we search fields and fens, mountains and meadows, even your own backyard, to document the status of Vermont butterflies.

## Getting Started

### 1 Choose a place to go butterflying.

It can be your favorite natural area.

**OR**

#### A Priority Block.

Check out our interactive **priority block map** and adopt a block.

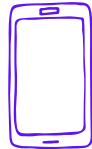


If you adopt a priority block, you are committing to at least one survey each month of that block between April and October.

Please see our eButterfly guides for step-by-step instructions.

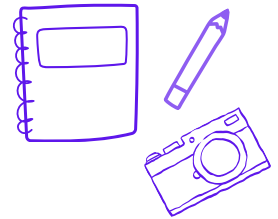
### 2 Start observing!

Download the eButterfly App on your phone to record your observations and submit checklists as you go.



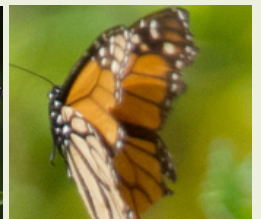
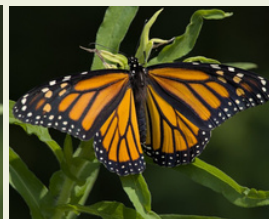
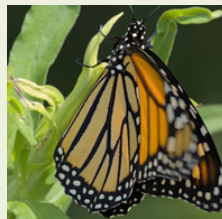
**OR**

Use a notebook and take photos in the field then enter your observations into e-Butterfly.org.



## Tips & Tricks

- Get up close and fill the frame.
- Take photos from multiple angles (top, bottom, side, front, back) or that show different features (wings, antennae).
- A blurry picture is better than no picture!
- Submit your checklist even if you see no butterflies.
- If you don't know what you're looking at, don't worry! eButterfly will help you ID your observations.



## Learn more about the Second Butterfly Atlas

